



NEOTEL CDMA Phone

Terima kasih atas kepercayaan Anda menggunakan Neotel Fixed Wireless, berikut ini adalah dokumen yang akan membantu Anda dalam melakukan setting Internet/Data. Sebelum melakukan setting terlebih dahulu akan dijelaskan kegunaan dan fungsi – fungsi yang ada.

Neotel CDMA Phone mempunyai beberapa tipe produk antara lain :

1. CX 5000 (Handset)
2. HTP 800/1900 (Fixed Wireless Phone)
3. HTP 800U/1900U (Fixed Wireless Phone – RUIM)
4. HTT 800/1900 (Fixed Wireless Terminal)
5. DataCard – PCMCIA&USB

Untuk Akses Data Internet Neotel menggunakan 2 jenis kabel data pilihan :

1. Serial RS232
2. Kabel USB

Kami berharap penjelasan ini akan bermanfaat untuk Anda, jika Anda mengalami kesulitan dalam setting Internet Anda bisa menghubungi Authorized Dealer & Service Point Neotel di kota Anda.

Berikut Informasi Service Center & Service Point Neotel CDMA :

1. Jakarta : 021 – 55957424 / 55957660 / 70700150
2. Surabaya : CV.SuryaPhone. Telp (031) 5353497
3. Denpasar : CV.Bahagia Tiga Putra.Telp (0361) 242288
4. Medan : CV.Kusumatel. Telp (061) 4151818
5. Pekanbaru : Winstar. Telp (0761) 839111
6. Balikpapan : RodaLink. Telp (0542)732142
7. Jogja & Jateng : Dewi Sri Seluler. Telp (0274) 545968
8. Makassar : ELKOM. Telp (0411) 5045678

Tipe dan Kabel Data yang digunakan :

1. Kabel Serial/RS232 : CX5000 / HTP / HTT
2. Kabel USB : HTP 800 / 1900 atau HTP 800u/1900u



Setting Internet / Data

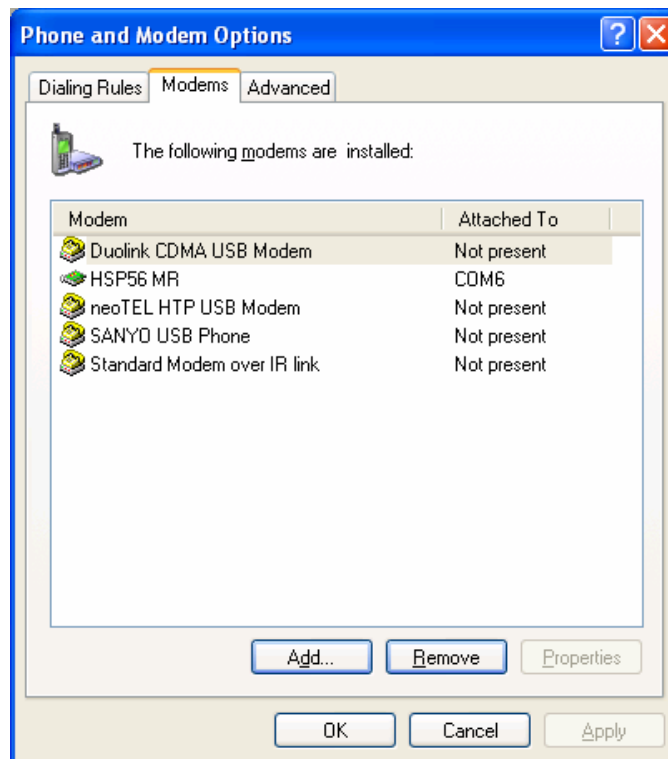
1. Setting Internet Dengan Menggunakan Kabel Data Serial

Setting Data Mode Terminal/Pesawat Neotel :

- HTP 800/1900
MENU → 0 → 4 → 1 → 2 (Data Port: UART1) → Store
- HTT 800/1900 (Terminal Fax/Paralel Port)
36 * # 102 (Nada Tone)
- CX5000
*362362#MSG(Icon SMS)

a. Setting Modem pada Windows XP

- Start → Control Panel → Phone&Modem → Modem

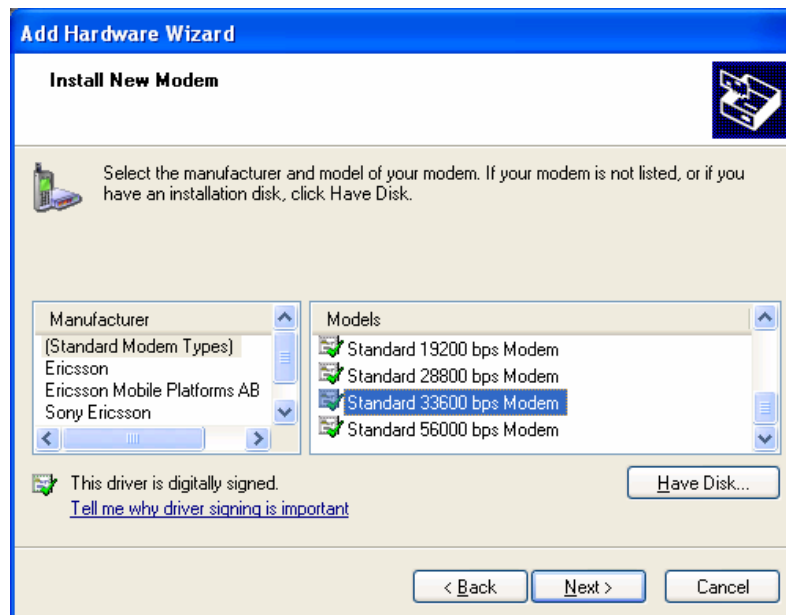




- Tekan Tombol Add → Install New Modem → Klik “Don’t Detect myModem....” tekan Next



- Pilih : Standart Modem Type → Standart 33600bps Modem



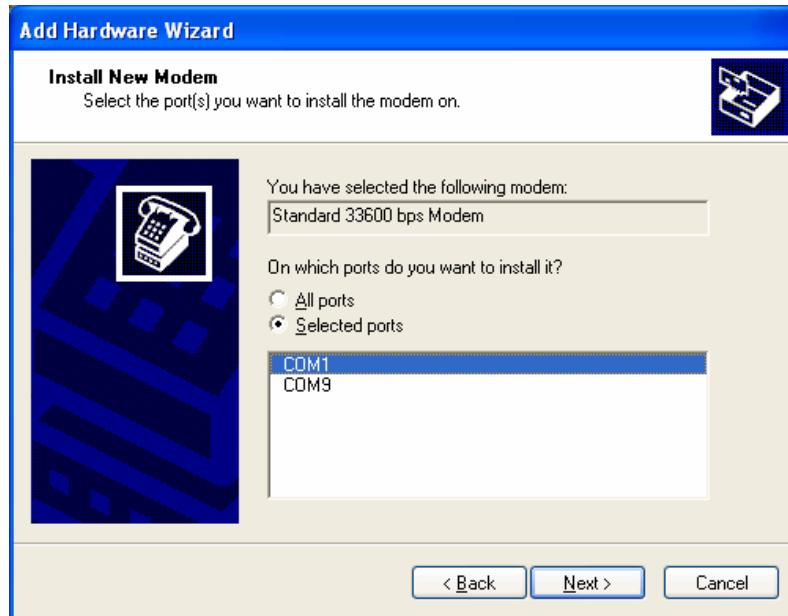
Note :

Standart Modem ini bisa di set pada boudrate : 19200 bps atau kita bisa memilih pada Standart 33600 bps modem.



Untuk HTP 800/1900 atau HTT 800/1900 mempunyai Maximum Speed Boudrate : 115200 bps dan kita harus menyamakan posisi speed agar tidak terjadi Error Communication pada saat awal.

- Pilih COM sesuai kondisi PC Anda (COM1/COM2)

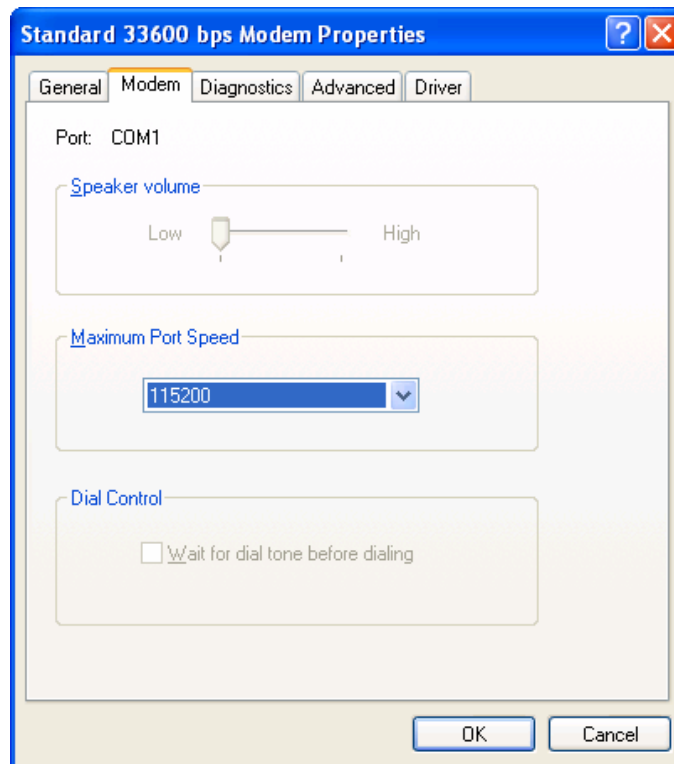


- FINISH (Setting Modem pada OS Window XP selesai)





- Klik Property pada Setting Modem 33600 bps untuk setting Port Speed Modem



Setting modem Selesai

b. Setting Dial Up Networking/Network Connection

- Start -> Control Panel -> Network Connection -> New Connection/Add New Connection





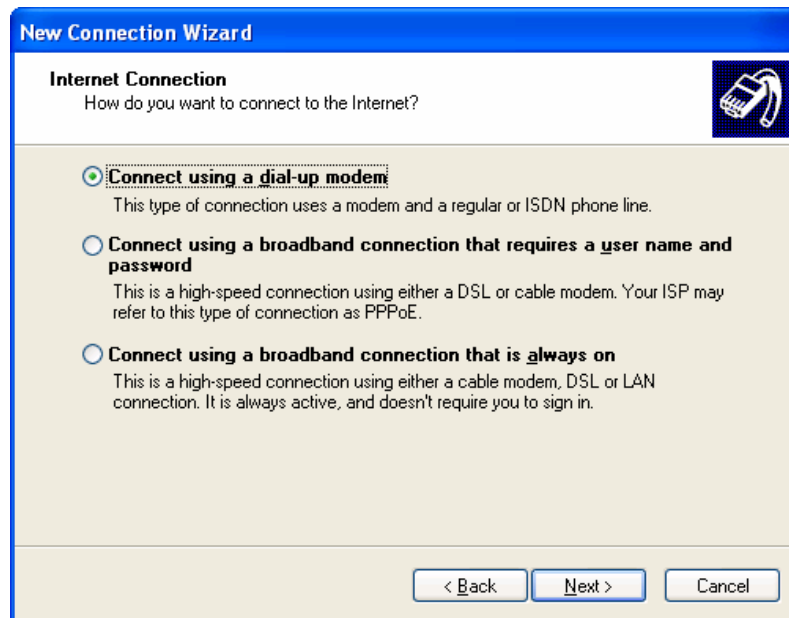
- Pilih "Connect to The Internet"



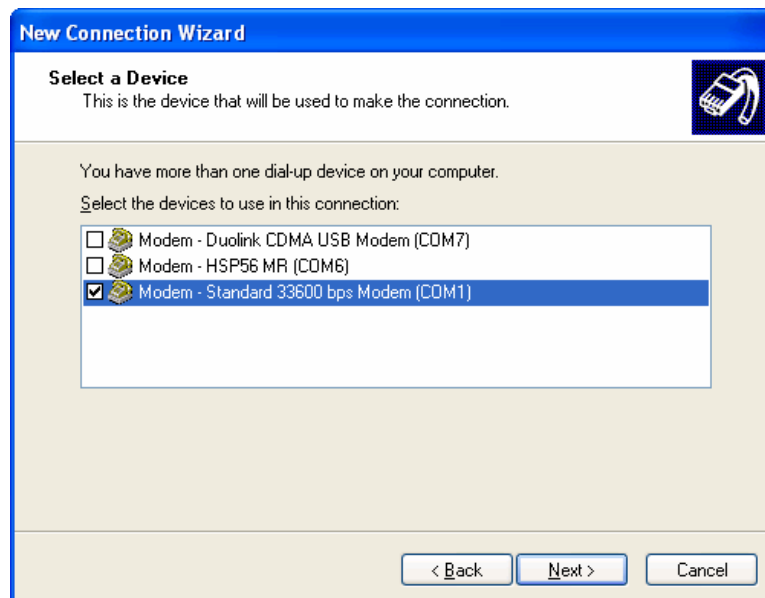
- Klik "Setup My Connection Manually".



- Pilih "Connect Using a dial up Modem"



- Pilih Setting Modem yang ingin digunakan .



Klik Next untuk melanjutkan langkah berikutnya.



- Isi Nama Koneksi Internet dari Operator yang dipakai
Contoh : ISP Name : StarOne/Indosat

New Connection Wizard

Connection Name
What is the name of the service that provides your Internet connection?

Type the name of your ISP in the following box.

ISP Name

starone

The name you type here will be the name of the connection you are creating.

< Back Next > Cancel

- Isi Nomer Dial up/Nomer Paket Data dari Operator : **#777**

New Connection Wizard

Phone Number to Dial
What is your ISP's phone number?

Type the phone number below.

Phone number:

#777

You might need to include a "1" or the area code, or both. If you are not sure you need the extra numbers, dial the phone number on your telephone. If you hear a modem sound, the number dialed is correct.

< Back Next > Cancel



- Isi user ID dan Password
User ID : starone
Password : indosat

New Connection Wizard

Internet Account Information
You will need an account name and password to sign in to your Internet account.

Type an ISP account name and password, then write down this information and store it in a safe place. (If you have forgotten an existing account name or password, contact your ISP.)

User name:

Password:

Confirm password:

Use this account name and password when anyone connects to the Internet from this computer

Make this the default Internet connection

Turn on Internet Connection Firewall for this connection

< Back Next > Cancel

- Setup koneksi Internet selesai

New Connection Wizard

Completing the New Connection Wizard

You have successfully completed the steps needed to create the following connection:

starone

- Make this the default connection
- This connection is firewalled
- Share with all users of this computer
- Use the same user name & password for everyone

The connection will be saved in the Network Connections folder.

Add a shortcut to this connection to my desktop

To create the connection and close this wizard, click Finish.

< Back Finish Cancel

Note :

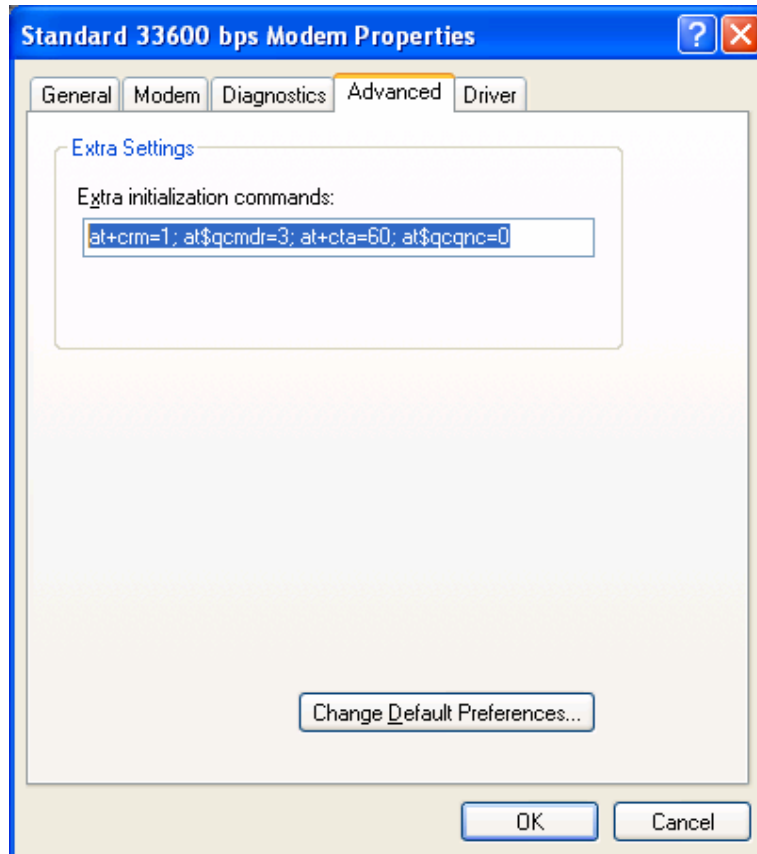
Pastikan Port Speed/Baudrate pada Terminal/Pesawat CDMA dengan Port Speed pada Setting Windows sama, hal ini untuk penyesuaian agar tidak terjadi error Connection antara Terminal dengan OS Windows



Tambahan Setting Internet / Data untuk Neotel CX-5000

Extra Setting Command:

Control Panel -> Phone&Modem -> Standart Modem 33600 bps -> Property -> Advanced -> ketik **AT+CRM=1;AT\$QCMDR=3;AT+CTA=60;AT\$QCQNC=0**





2. Setting Internet Dengan Menggunakan Kabel USB

Setting Data Mode Terminal/Pesawat Neotel :

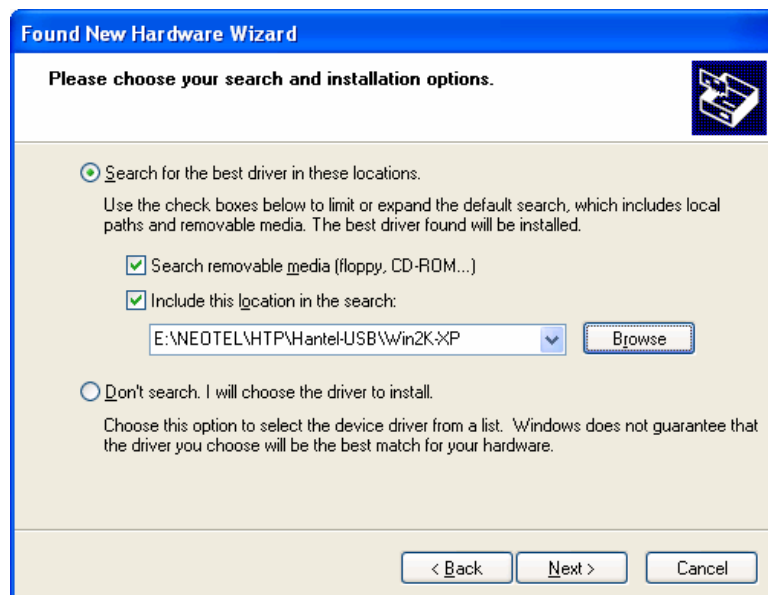
- HTP 800/1900 :
MENU → 0 → 4 → 1 → 2 (Data Port: USB CDC) → Store

a. Setting Modem pada Windows XP

- Install Driver USB Modem**
 - Pilih "Install from list or specific location (Advanced)"

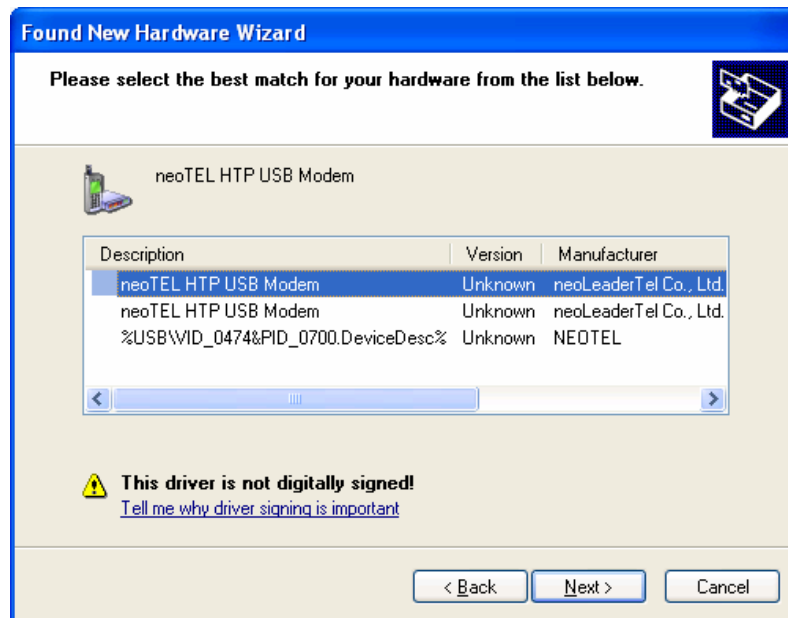


- Pilih Lokasi Driver USB dan klik Next...





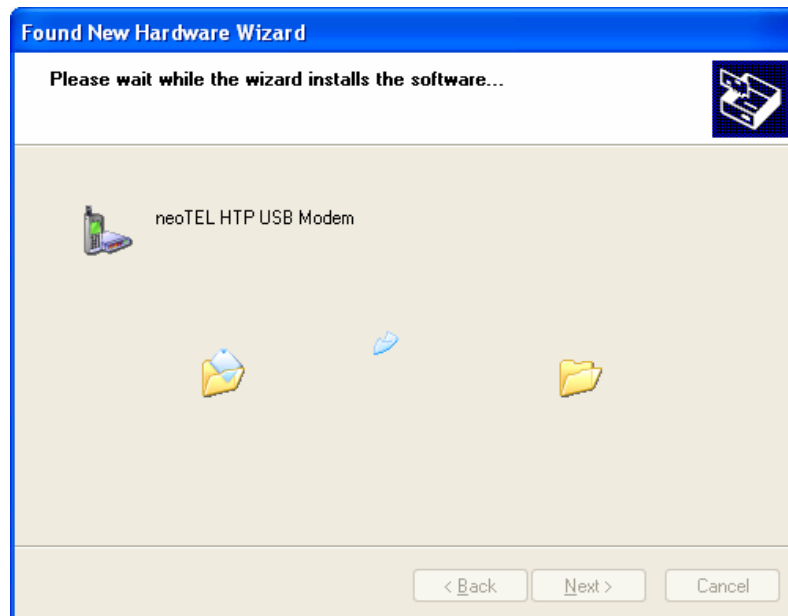
- Pastikan sesuai dengan OS Windows Anda, XP/Win98



Note :

Terdapat 3 Pilihan dan Pilih "Neotel HTP USB Modem" .

- Proses Install Driver sedang berlangsung...

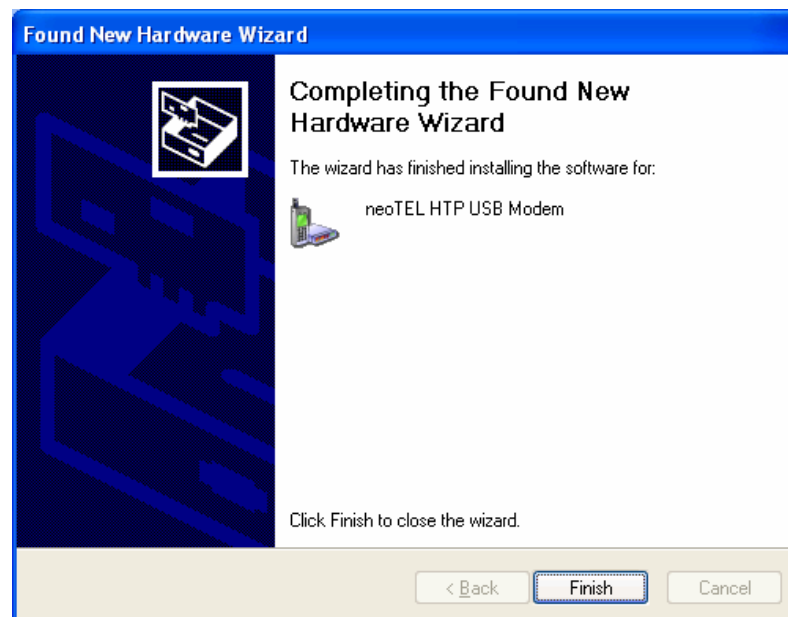




- Pilih "Continue Anyway" untuk melanjutkan proses install driver USB Modem



- Proses Installasi Driver USB Modem Neotel telah selesai.



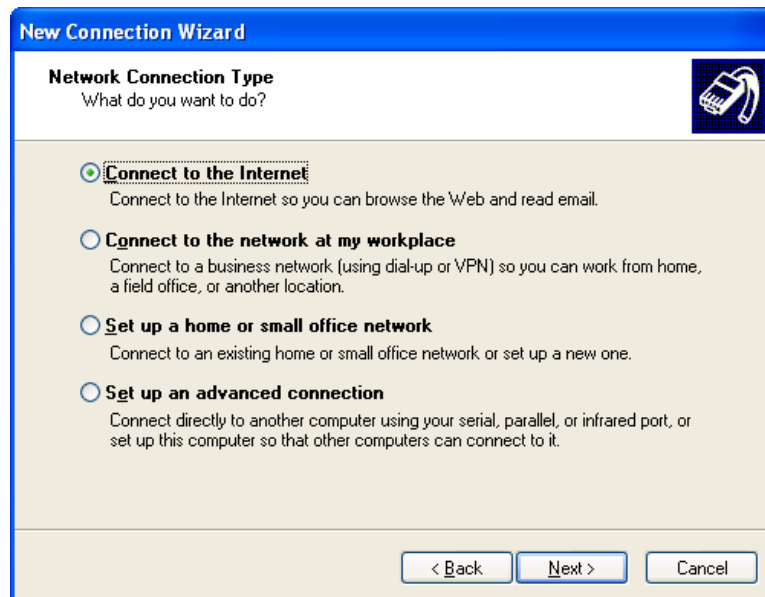
Setting USB modem Selesai

b. Setting Dial Up Networking/Network Connection

- Start -> Control Panel -> Network Connection -> New Connection/Add New Connection



- Pilih "Connect to The Internet"





- Klik "Setup My Connection Manually".

New Connection Wizard

Getting Ready
The wizard is preparing to set up your Internet connection.

How do you want to connect to the Internet?

- Choose from a list of Internet service providers (ISPs)
- Set up my connection manually**
For a dial-up connection, you will need your account name, password, and a phone number for your ISP. For a broadband account, you won't need a phone number.
- Use the CD I got from an ISP

< Back Next > Cancel

- Pilih "Connect Using a dial up Modem"

New Connection Wizard

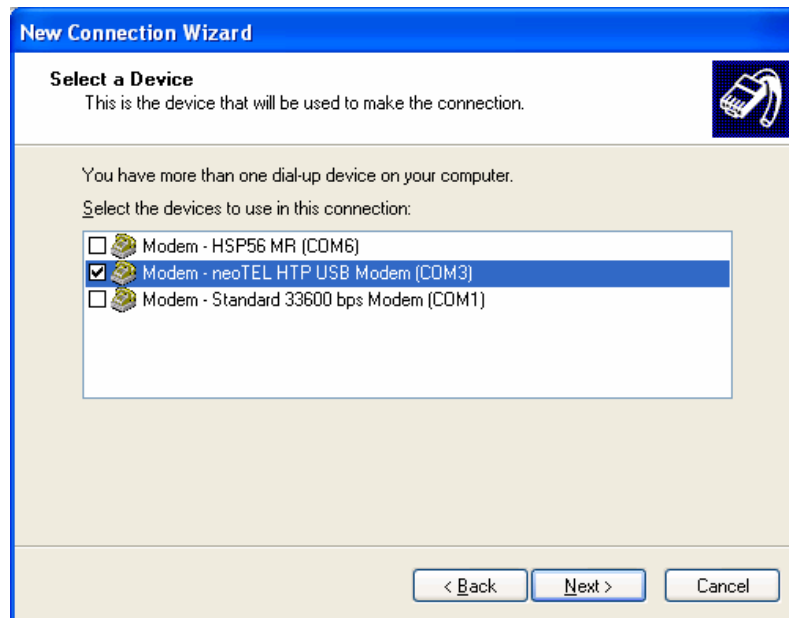
Internet Connection
How do you want to connect to the Internet?

- Connect using a dial-up modem**
This type of connection uses a modem and a regular or ISDN phone line.
- Connect using a broadband connection that requires a user name and password**
This is a high-speed connection using either a DSL or cable modem. Your ISP may refer to this type of connection as PPPoE.
- Connect using a broadband connection that is always on**
This is a high-speed connection using either a cable modem, DSL or LAN connection. It is always active, and doesn't require you to sign in.

< Back Next > Cancel

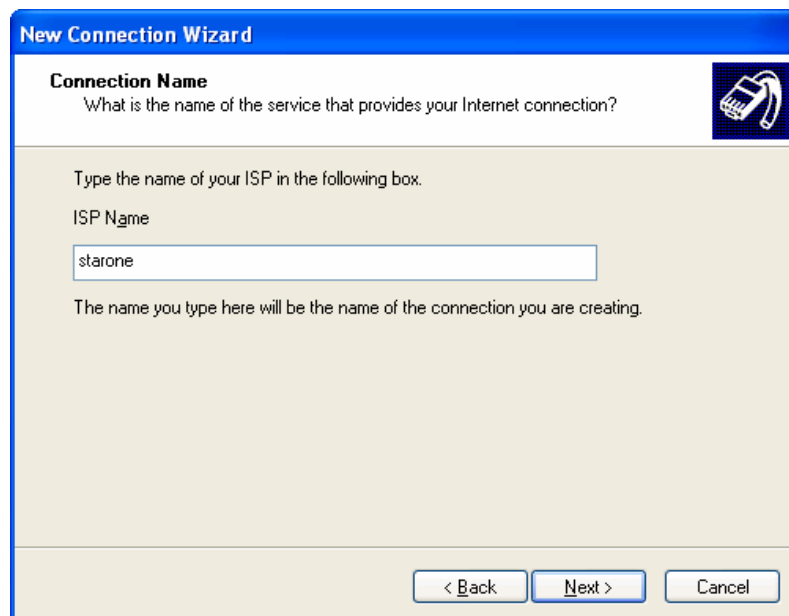


- Pilih Setting Modem yang ingin dipakai.



Klik Next untuk melanjutkan Langkah berikutnya.

- Isi Nama Koneksi Internet dari Operator yang dipakai
Contoh : ISP Name : StarOne/Indosat





- Isi Nomer Dial up/Nomer Paket Data dari Operator: #777

New Connection Wizard

Phone Number to Dial
What is your ISP's phone number?

Type the phone number below.

Phone number:

You might need to include a "1" or the area code, or both. If you are not sure you need the extra numbers, dial the phone number on your telephone. If you hear a modem sound, the number dialed is correct.

< Back Next > Cancel

- Isi user ID dan Password
User ID : starone
Password : indosat

New Connection Wizard

Internet Account Information
You will need an account name and password to sign in to your Internet account.

Type an ISP account name and password, then write down this information and store it in a safe place. (If you have forgotten an existing account name or password, contact your ISP.)

User name:

Password:

Confirm password:

Use this account name and password when anyone connects to the Internet from this computer

Make this the default Internet connection

Turn on Internet Connection Firewall for this connection

< Back Next > Cancel



- Setup koneksi Internet selesai



Note :

Pastikan Port Speed / Baudrate pada Terminal/Pesawat CDMA dengan Port Speed pada Setting Windows sama, hal ini untuk penyesuaian agar tidak terjadi Error Connection antara : Terminal dengan OS Windows



Tambahan Setting Internet / Data Neotel CX5000

Extra Setting Command :

Control Panel → Phone&Modem → Standart Modem 33600bps → Property →
Advanced → ketik **AT+CRM=1;AT\$QCMDR=3;AT+CTA=60;AT\$QCQNC=0**

