

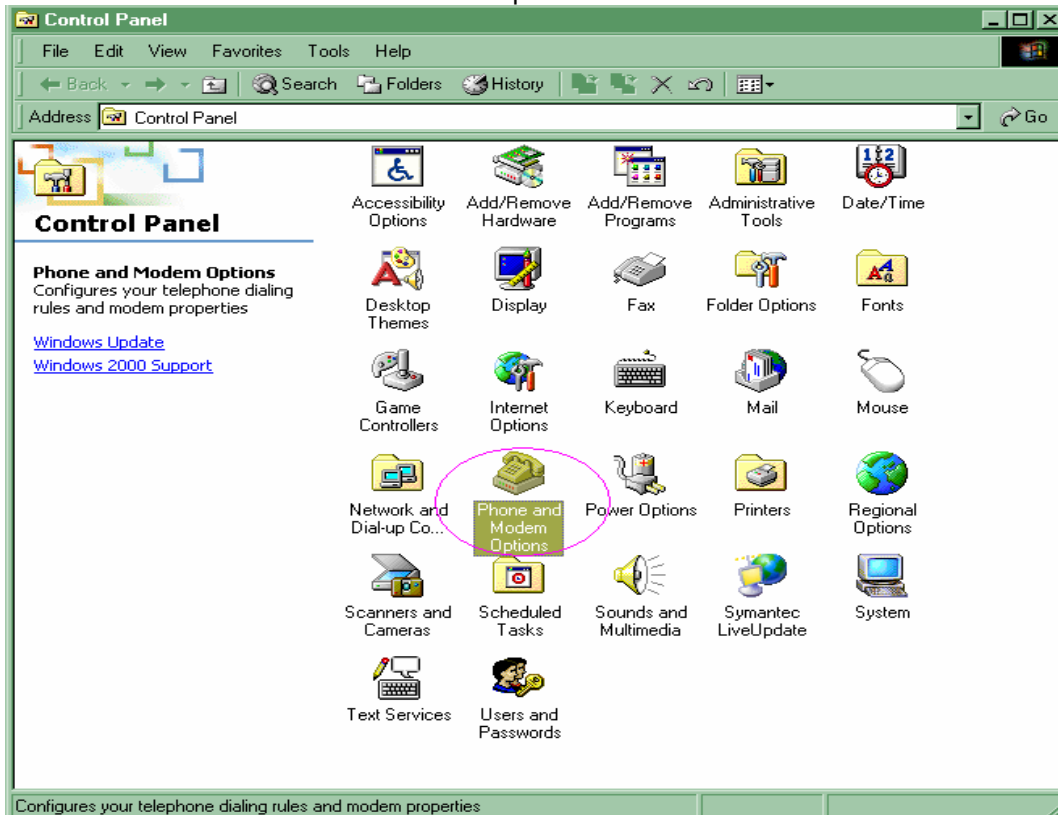


Setting Internet StarOne untuk Fixed Wireless Terminal (FWT) Windows 2000

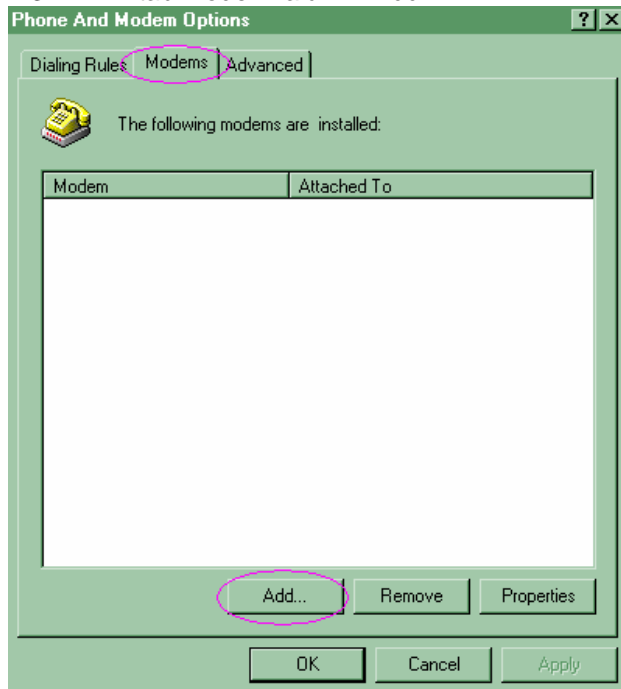
Berlaku untuk : FWT INTI 1x 19, INTI 1x 80, Sanex SC 3200, SC 3210, AFT 302

1. Pertama setting Modem yang akan digunakan untuk koneksi, langkahnya sebagai berikut:

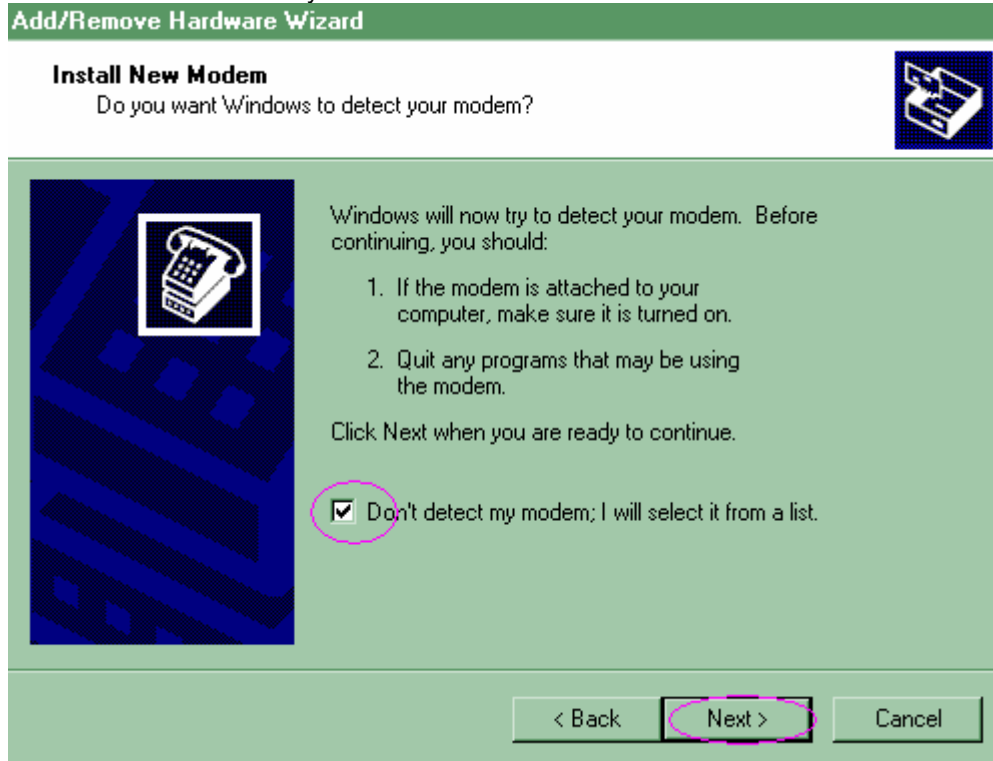
- 1.1. Hubungkan pesawat telepon CDMA anda dengan kabel data ke komputer (PC)
- 1.2. Pada PC anda, buka control panel dengan klik tombol Start> Setting> Control Panel, lalu double klik Phone and Modem Options



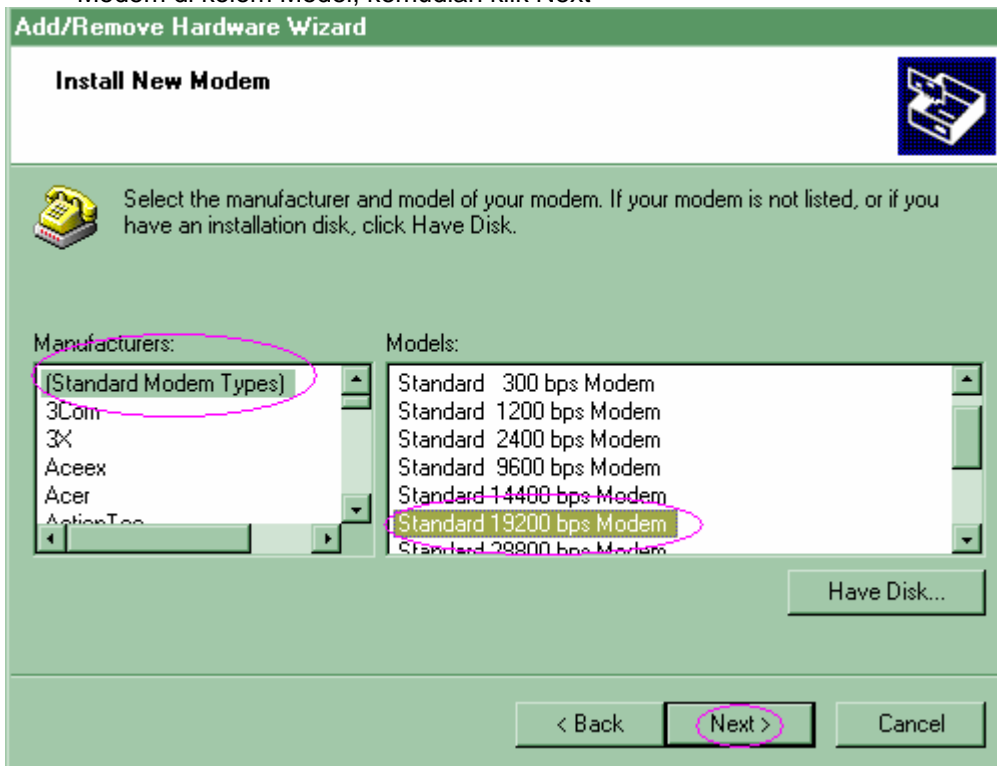
1.3. Pilih tab Modem lalu klik Add



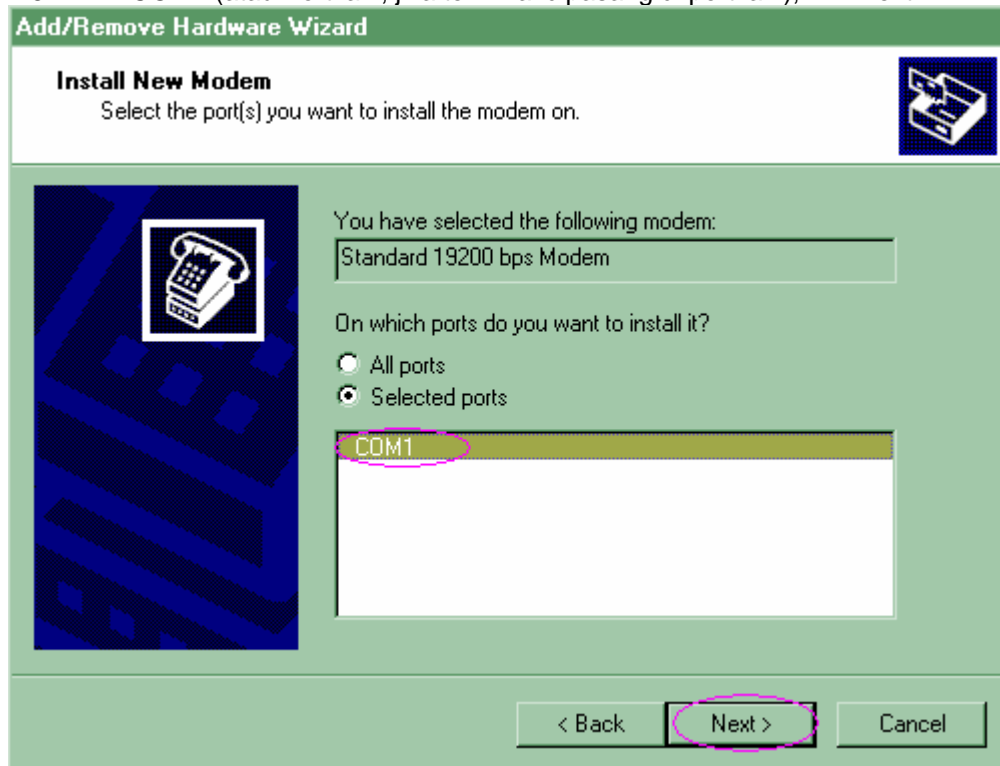
1.4. Cek Don't detect my modem> kemudian klik Next



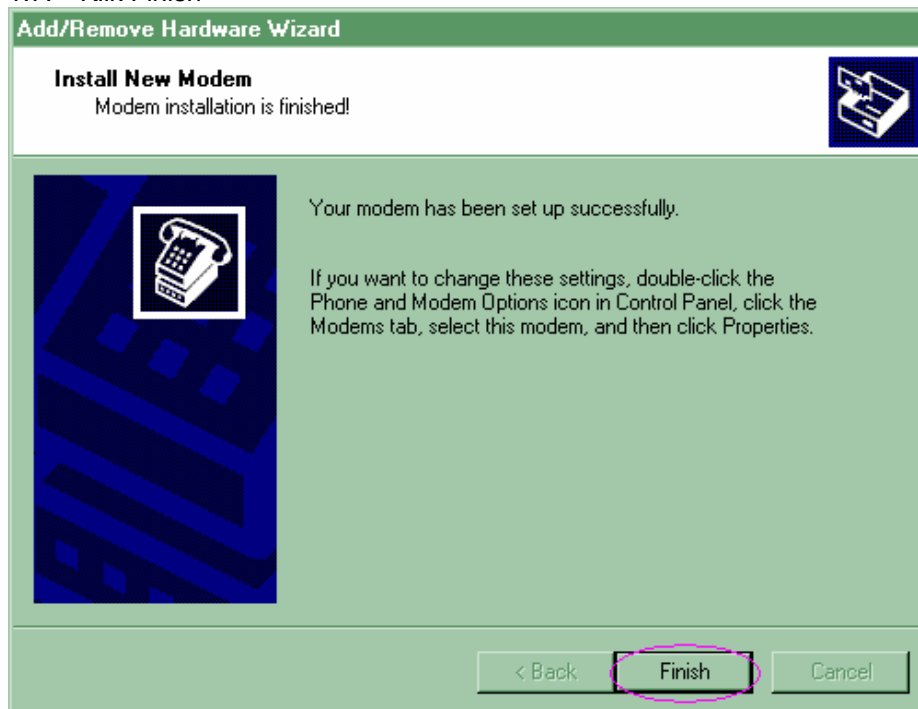
- 1.5. Pilih Standard Modem Types di kolom Manufacturers dan Pilih Standard 19200 bps Modem di kolom Model, kemudian klik Next



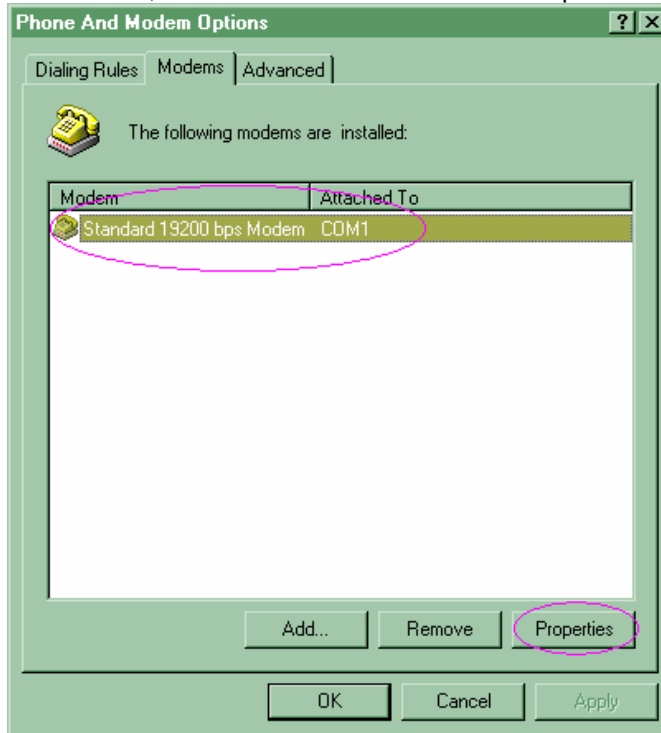
1.6. Klik COM1 (atau Port lain, jika terminal dipasang di port lain), Klik Next



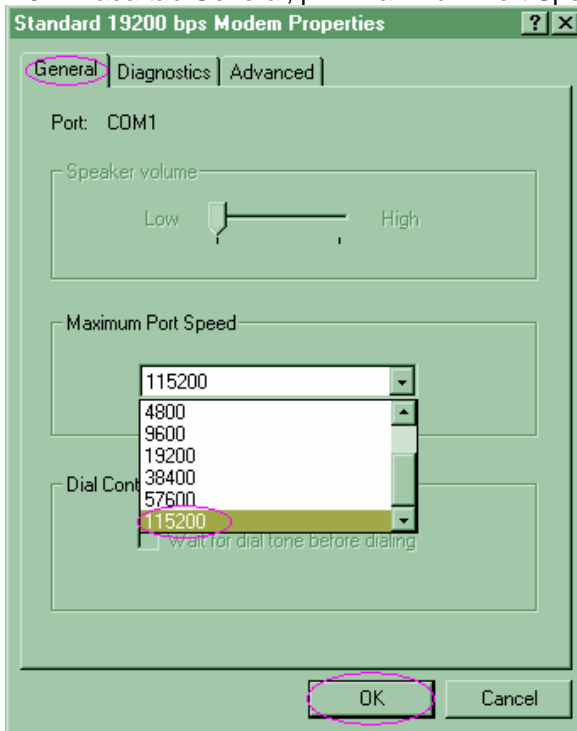
1.7. Klik Finish



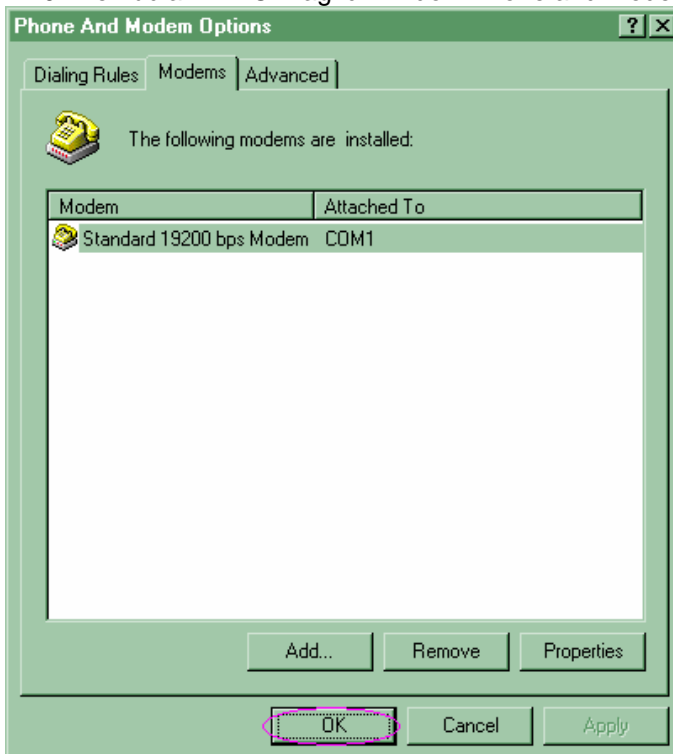
1.8. Setelah itu di window Phone and Modem Options muncul Modem yang telah anda Install, Pilih Modem tersebut lalu Klik Properties



1.9. Pada tab General, pilih Maximum Port Speed (biasanya 115200), lalu Klik OK



1.10. Kemudian klik OK lagi di window Phone and Modem Options



1.11. Anda telah selesai menyetting Modem Anda.

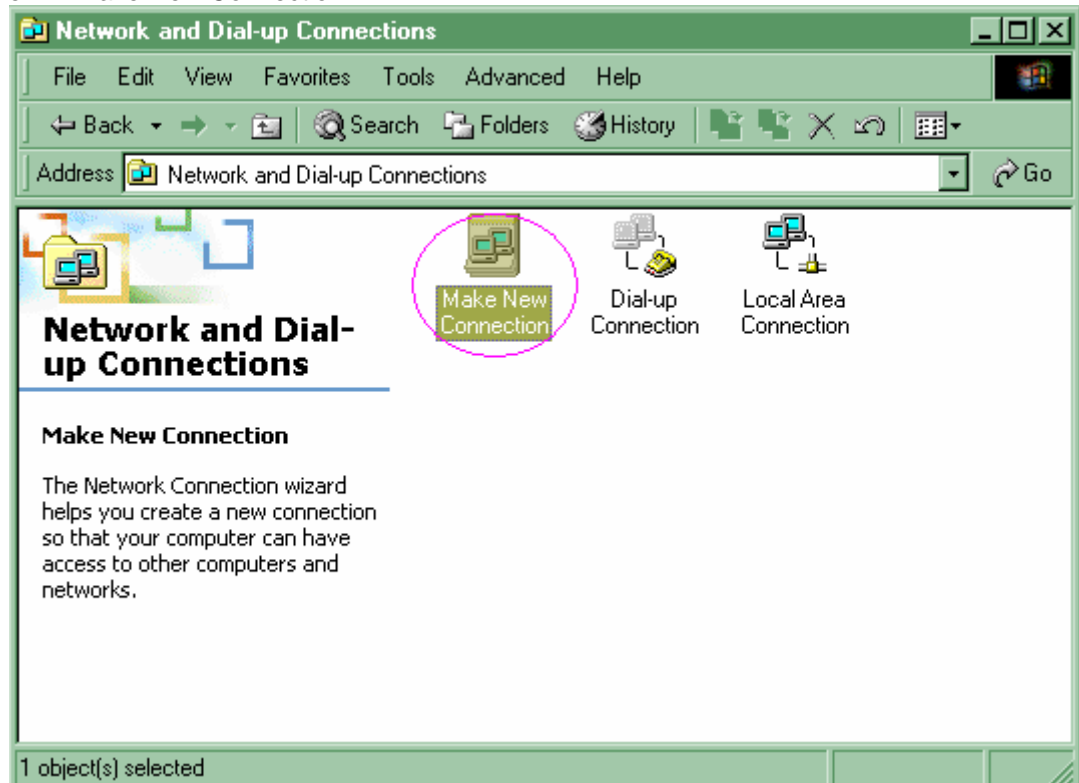


2. Setelah itu kembali ke window Control Panel untuk menyetting koneksi internetnya

2.1. Double klik Network and Dial-Up Connections untuk menyetting koneksi internet StarOne.



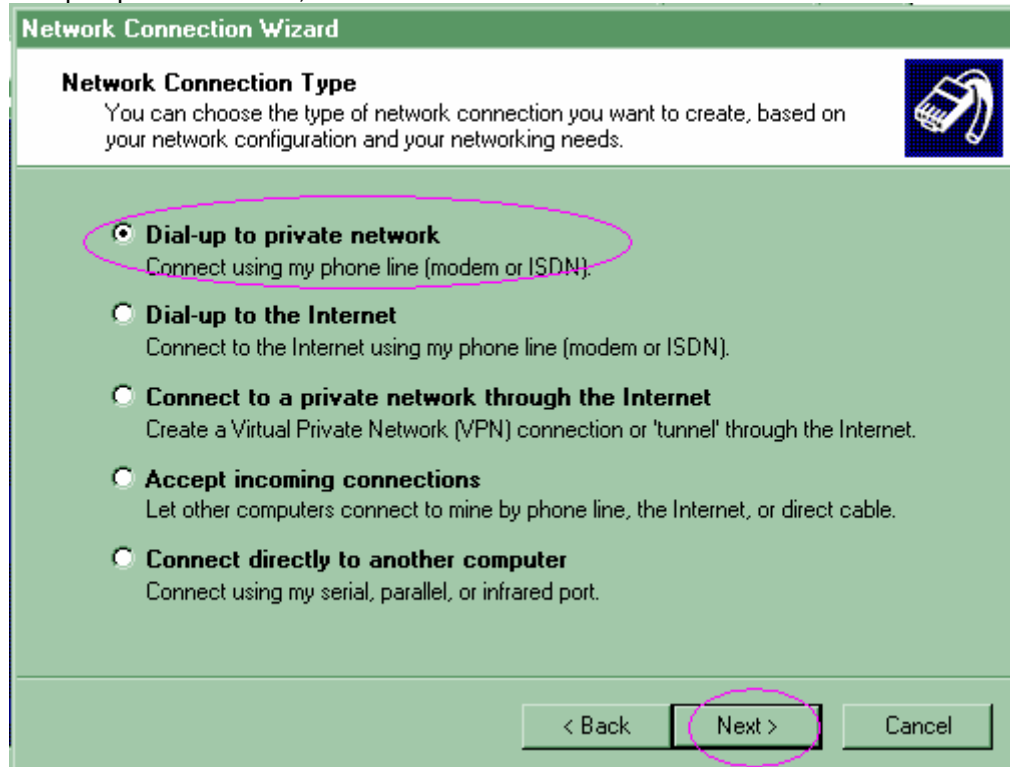
2.2. Double klik Make New Connection



2.3. Muncul window Wizard, lalu klik Next



2.4. Pilih Dial-up to private network, lalu klik Next



2.5. Pilih Modem yang tadi anda Install, lalu klik Next

Network Connection Wizard

Select a Device
This is the device that will be used to make the connection.

You have more than one dial-up device on your computer.

Select the devices to use in this connection:

- Modem - Standard 19200 bps Modem (COM1)
- Modem - Standard 28800 bps Modem (COM1)

< Back **Next >** Cancel

2.6. Masukkan nomor dialnya, yaitu : #777, lalu klik Next

Network Connection Wizard

Phone Number to Dial
You must specify the phone number of the computer or network you want to connect to.

Type the phone number of the computer or network you are connecting to. If you want your computer to determine automatically how to dial from different locations, check Use dialing rules.

Area code: Phone number:

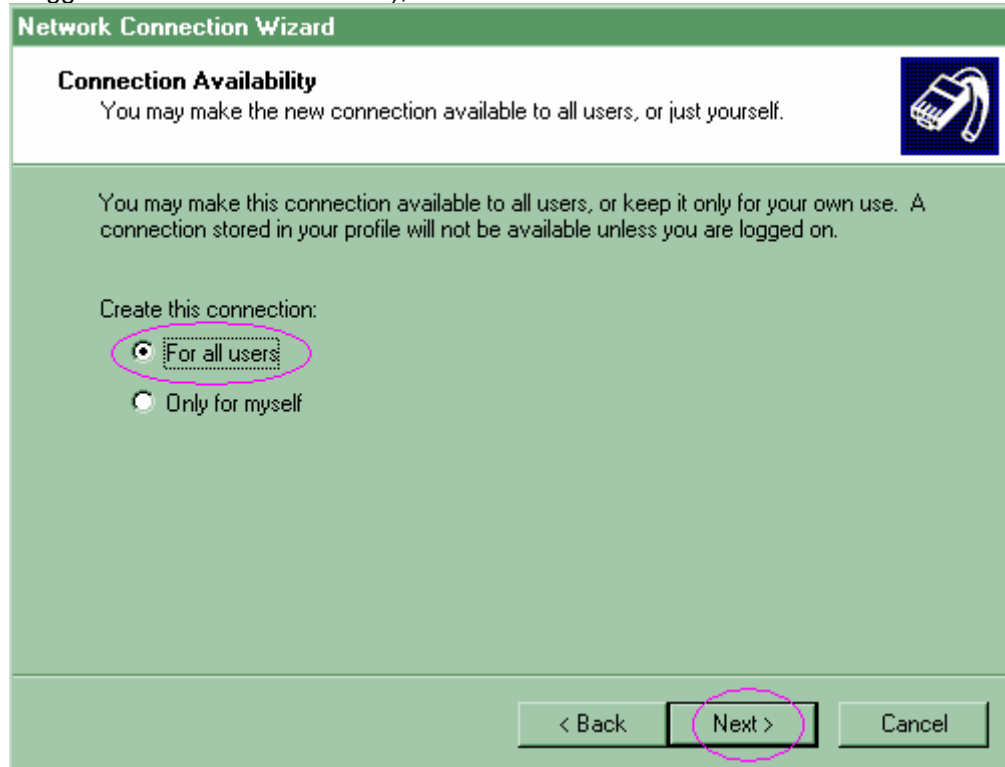
Country/region code:

Use dialing rules

< Back **Next >** Cancel



2.7. Pilih For all users (atau Only for myself jika anda mengharapkan hanya user anda yang bisa menggunakan koneksi internet ini), lalu klik Next



2.8. Ketik nama connection yang anda buat ini, (missal : StarOne) dan cek kolom "Add a shortcut to my desktop" untuk memudahkan anda men-Dial di lain waktu, klik Next



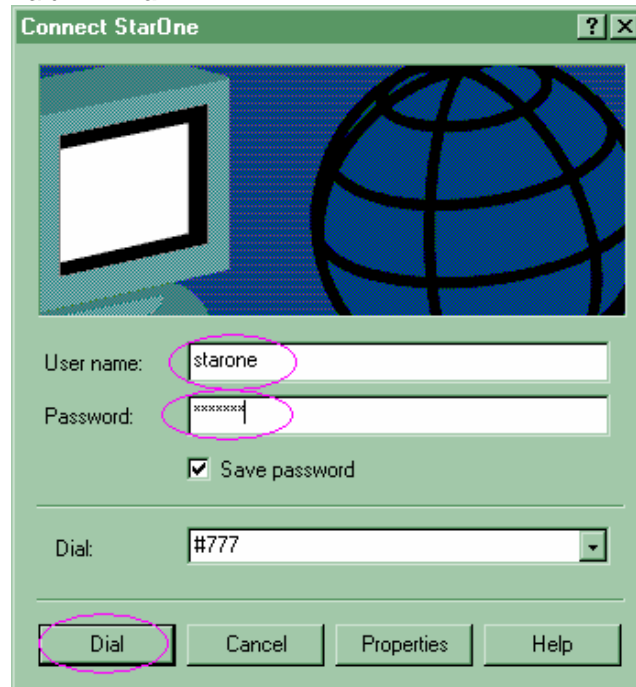


2.9. Masukkan user dan password StarOne, sbb:

User : **starone**

Password : **indosat**

Lalu klik **Dial**



2.10. Setelah itu muncul windows di bawah dan anda akan terhubung dengan jaringan internet StarOne.

